



# High Performance Armrest

 SUMITOMO RIKO

**Abstract**

**The future of cabin by development of autonomous driving**



<https://insideevs.com/volkswagen-id-buzz-concept-likely-production-bound/>

**Improve the functionality of Armrest always beside the occupants**

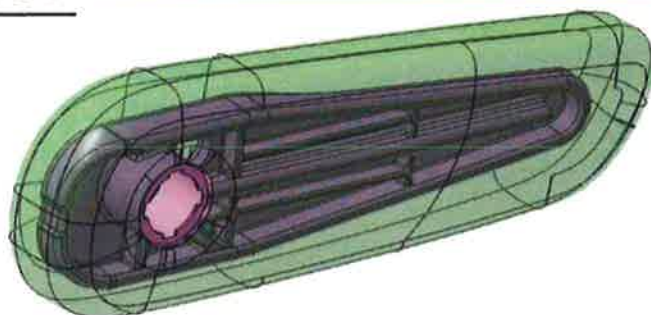
**SUMITOMO  
ELECTRIC  
GROUP**



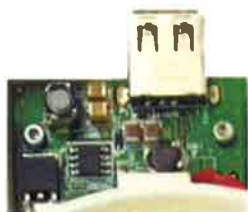
# Functional Armrest

 SUMITOMO RIKO

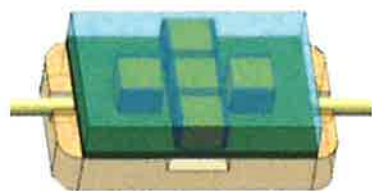
## Armrest



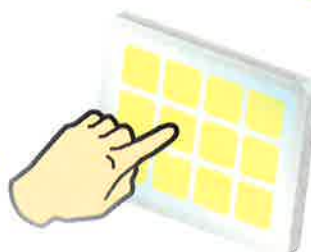
## Electronic devices



USB



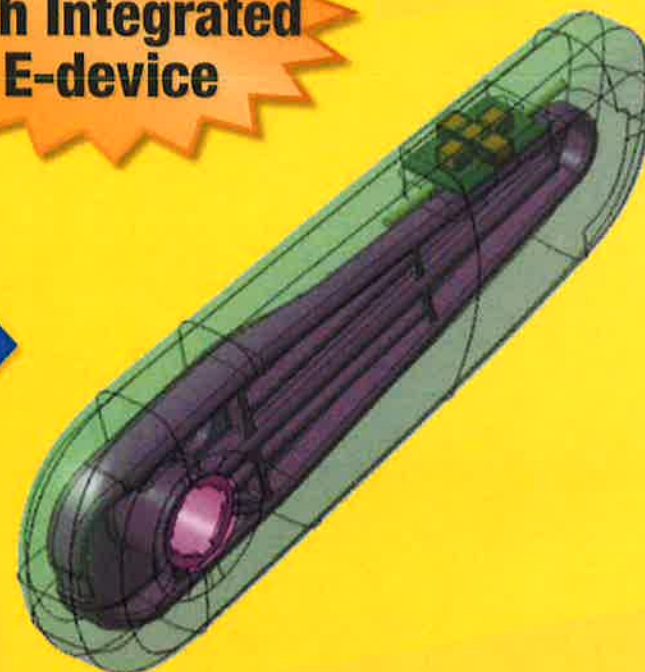
Switch



Touch display  
etc.

+

**Armrest  
with Integrated  
E-device**



SUMITOMO  
ELECTRIC  
GROUP





# Armrest built-in USB

 SUMITOMO RIKO

## Built-in the USB port into Armrest

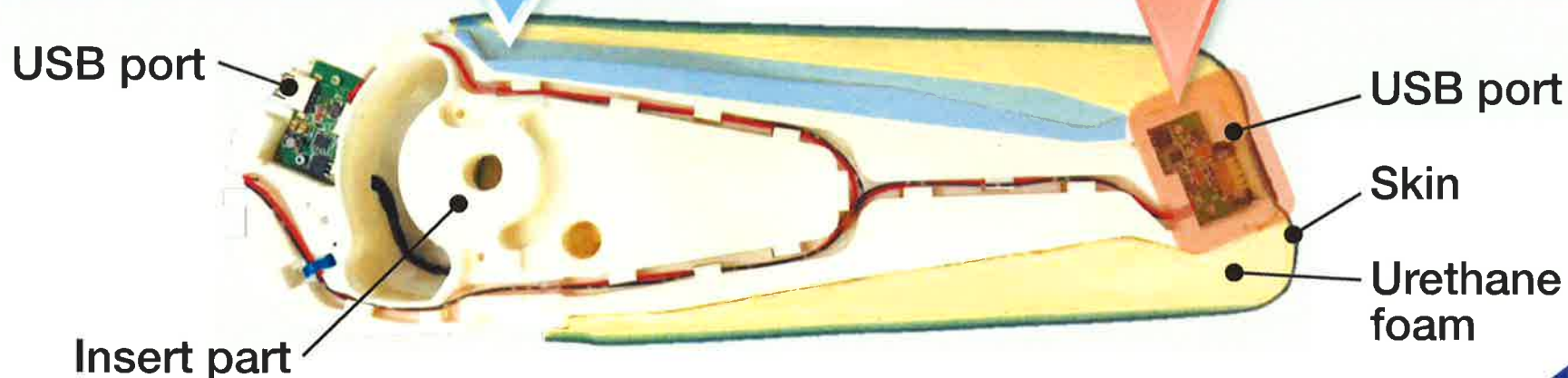
- Use for charge the smartphone at hand
- Available as an signal communication interface

### No gap by integral molding

- Securing of adhesion
- Securing of design

### No need for post-assembly

- Reduction of process
- Easier parts mounting



SUMITOMO  
ELECTRIC  
GROUP



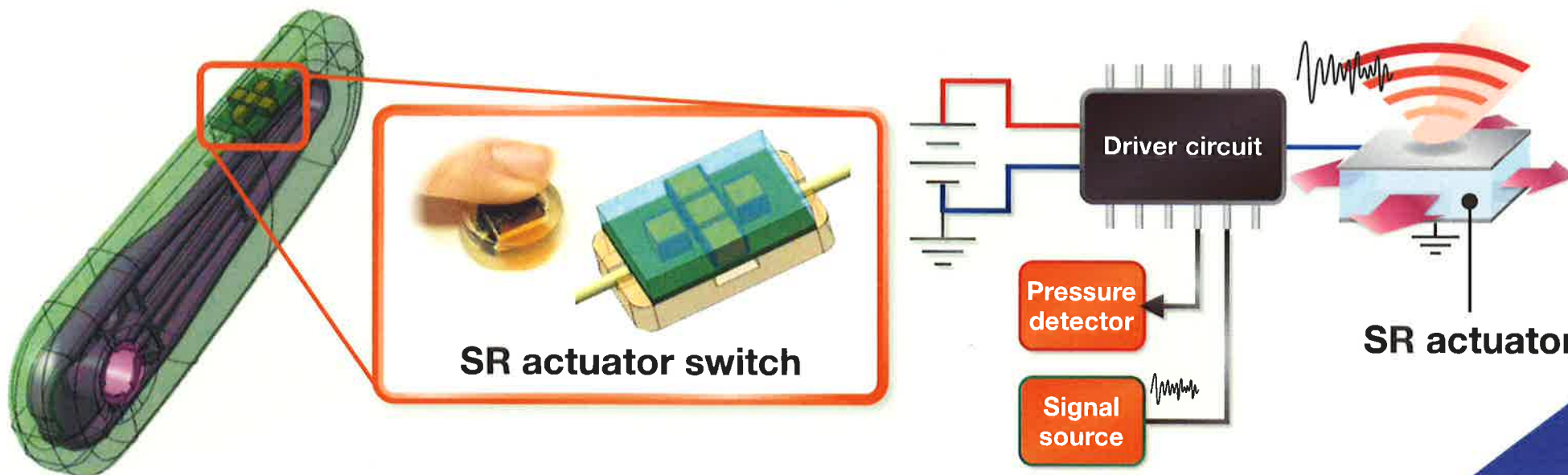
# Armrest built-in Switch

 SUMITOMO RIKO

## Built-in the SR (Smart Rubber) actuator switch into Armrest

- Available for multimedia operation at hand
- Seamless design realized by pressure-sensor
- Various operability improved by haptic feedback

- What is SR actuator...  
The rubber actuator that can **detect the pressure** and can **generate haptic feedback**



SUMITOMO  
ELECTRIC  
GROUP