

# Sumitomo Riko Group

# High Pressure Hoses



**SumiRiko Hosetex, Ltd.**

1 Toyosaka-cho, Ayabe-shi, Kyoto 623-0177, Japan  
TEL : +81(0)773-40-5268  
FAX : +81(0)773-40-5251

**Sumitomo Riko Europe GmbH**

Hanauer Landstraße 187-189, 60314 Frankfurt  
am main, Germany  
TEL : +49 (0)69-94947980

**Sumitomo Riko America, Inc.**

41441 11 Mile Road, Novi, Michigan 48375, USA  
TEL : +1-248-946-4915  
FAX : +1-248-946-4922

**SumiRiko Industrial Products(Shanghai) Co.,Ltd.**

TEL : +86 (0)573-8338-7035  
FAX : +86 (0)573-8338-7037

Products Specification ADVANSTAR HOSE Series

 **SUMITOMO RIKO**

**Sumitomo Riko Group**  
 **SumiRiko Hosetex, Ltd.**

**Exceed The International Common Standrad**

**ADUANSTAR**★

Hose Structure	<b>INNER COVER :</b> OIL RESISTANT SYNTHETIC RUBBER
	<b>REINFORCEMENT :</b> STEEL WIRE
	<b>OUTER COVER :</b> OIL AND WEATHER RESISTANT SYNTHETIC RUBBER



■ Sumitomo Riko global hydraulic hose meet the requirements of SAE/DIN/ISO/MSHA.

		Exceed the International Standards DIN EN853/SAE J517 DIN EN856/ISO 6803						
	mm	Inch	DIB-1SN (R1T/R1S)	DIB-2SN (R2T/R2S)	DHD-4SP (R12)	DHD-4SH (R13)	DHD-R15	
Upper ; Structure of Reinforcement	6.3	1/4	1W 22.5 (3,250)	2W 40.0 (5,800)				
	7.9	5/16	1W 21.5 (3,120)	2W 35.0 (5,100)				
	9.5	3/8	1W 18.0 (2,600)	2W 33.0 (4,780)	4S 44.5 (6,500)		4S 42.0 (6,100)	
	12.7	1/2	1W 16.0 (2,320)	2W 27.5 (4,000)	4S 41.5 (6,000)		Same as DHD-4SP	
	15.9	5/8	1W 13.0 (1,880)	2W 25.0 (3,620)	4S 38.0 (5,500)			
	19.0	3/4	1W 10.5 (1,520)	2W 21.5 (3,120)		4S 42.0 (6,100)	Same as DHD-4SH	
	Lower ; Max Working Pressure MPa(Psi)	25.4	1	1W 8.8 (1,280)	2W 16.5 (2,400)	4S 32.5 (4,700)	4S 38.0 (5,500)	4S 42.0 (6,100)
		31.8	1_1/4	1W 6.3 (920)	2W 12.5 (1,800)		4S 32.5 (4,700)	6S 42.0 (6,100)
		38.1	1_1/2	1W 5.0 (725)	2W 9.0 (1300)		4S 29.0 (4,200)	
		50.8	2	1W 4.0 (580)	2W 8.0 (1,150)		4S 25.0 (3,620)	
Warranty	Minimum Number of Impulse test Cycles		300,000 Cycles		500,000 Cycles			
	Period		1 Year					
Impulse Test Pressure			Max WP×133%			Max WP×120%		
Minimum Burst Pressure			Max WP×4					
Operating Temperature			-40℃~+100℃ For WB / -40℃~+120℃ For WS (-40ℱ~+212ℱ) / (-40ℱ~+248ℱ)					
Application			General Hydraulic Line(Construction Machine, Other Industrial Machine), Hydraulic fluids, Lubricating Oil					
Features			Easy assembly design because of excellent adaptabilas with general metal fittings.					

- Our global hose widely used on hydraulic equipments such as machines of construction, mining, loading, tool and iron.
- The hose can be easily identified from the specification.
- With No-skiving technology,which improves the assembly efficiency and assure high quality of cleanliness.



		SLIM Design Series				
	mm	Inch	DIB-1SC (EN857)	DIB-2SC (EN857)	EXS-4SP	EXS-4SH
Upper ; Structure of Reinforcement	6.3	1/4	1W 22.5 (3,250)	2W 40.0 (5,800)		
	7.9	5/16	1W 21.5 (3,120)	2W 35.0 (5,100)		
	9.5	3/8	1W 18.0 (2,600)	2W 33.0 (4,780)		
	12.7	1/2	1W 16.0 (2,320)	2W 27.5 (4,000)	4S 42.0 (6,100)	
Lower ; Max Working Pressure MPa(Psi)	15.9	5/8			4S 38.0 (5,500)	
	19.0	3/4			4S 38.0 (5,500)	
	25.4	1			4S 32.5 (4,700)	4S 38.0 (5,500)
	31.8	1_1/4				4S* 35.0 (5,100)
Warranty	Minimum Number of Impulse test Cycles		400,000 cycles		500,000 cycles (*200,000 cycles)	
	Period		1 Year			
Impulse Test Pressure			133% of Maximum working pressure			
Minimum Burst Pressure			4 × Maximum working pressure			
Operating Temperature			SC : -40℃~+100℃ (+32ℱ~+212ℱ) EXS-4S : -40℃~+120℃ (+32ℱ~+248ℱ)			
Application			General hydraulic Oil (Construction machine and other industrial machine), Mineral hydraulic oil			
Features			Easy assembly design with excellent adaptability to general metal fittings			

## DIB SERIES

### Main application

Construction Machine, Agricultural Machine, Industrial Equipment, Machining Tool and various Hydraulic System.

### Features

- Good Anti-aging performance, Long impulse pressure life
- Flexibility
- Economic and environmental
- Easy to select the fittings
- Working pressure 4.0MPa~40.0MPa. Diameter 6mm~51mm. use the same fittings, reduce the Stock.
- No need skiving for SN, SC

standard : DIN EN853

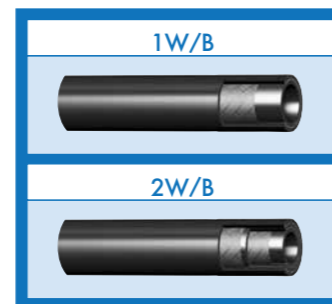
Packing : Cardboard Box

## DIB SERIES

Hose Structure	INNER COVER : OIL RESISTANT SYNTHETIC RUBBER
	REINFORCEMENT : STEEL WIRE
Recommended Fluids	Mineral Hydraulic Oil
Operating Temperature	-40°C ~ +100°C

Hose Layline Color: Green (Over -31)  
White (up to -25)

Hose Structure & Reinforcement



DIB-1SN	I.D.		O.D.		Max.W.P.		Min.B.P.		Min.B.R.		Weight	
	inch	mm	inch	mm	psi	MPa	psi	MPa	inch	mm	lbs/ft	g/m
	-6	0.26	6.6	0.53	13.5	3,250	22.5	13,000	90.0	2.36	60	0.16
-8	0.32	8.1	0.59	15.0	3,120	21.5	12,480	86.0	2.56	65	0.18	270
-10	0.39	10.0	0.67	17.1	2,600	18.0	10,400	72.0	2.76	70	0.22	325
-12	0.51	13.0	0.80	20.4	2,320	16.0	9,280	64.0	3.15	80	0.28	420
-16	0.63	15.9	0.94	23.8	1,880	13.0	7,520	52.0	4.33	110	0.34	500
-19	0.75	19.0	1.08	27.5	1,520	10.5	6,080	42.0	5.12	130	0.44	655
-25	1.00	25.4	1.41	35.9	1,280	8.8	5,120	35.2	6.69	170	0.56	830
-31	1.25	31.8	1.70	43.1	920	6.3	3,680	25.2	8.27	210	0.80	1,180
-38	1.50	38.1	1.98	50.2	725	5.0	2,900	20.0	9.45	240	0.98	1,455
-51	2.00	50.8	2.50	63.5	580	4.0	2,320	16.0	12.20	310	1.36	2,015

DIB-2SN	I.D.		O.D.		Max.W.P.		Min.B.P.		Min.B.R.		Weight	
	inch	mm	inch	mm	psi	MPa	psi	MPa	inch	mm	lbs/ft	g/m
	-6	0.26	6.6	0.59	14.9	5,800	40.0	23,200	160.0	3.15	80	0.25
-8	0.32	8.1	0.65	16.6	5,100	35.0	20,400	140.0	3.54	90	0.29	435
-10	0.39	10.0	0.74	18.7	4,780	33.0	19,120	132.0	3.94	100	0.36	535
-12	0.51	13.0	0.85	21.7	4,000	27.5	16,000	110.0	3.94	100	0.43	630
-16	0.63	15.9	0.98	25.0	3,620	25.0	14,480	100.0	4.72	120	0.50	740
-19	0.75	19.0	1.15	29.1	3,120	21.5	12,480	86.0	5.51	140	0.62	920
-25	1.00	25.4	1.49	37.9	2,400	16.5	9,600	66.0	7.09	180	0.97	1,435
-31	1.25	31.8	1.85	46.9	1,800	12.5	7,200	50.0	8.66	220	1.30	1,915
-38	1.50	38.1	2.12	53.9	1,300	9.0	5,200	36.0	10.24	260	1.53	2,255
-51	2.00	50.8	2.62	66.6	1,150	8.0	4,600	32.0	12.60	320	2.00	2,960

DIB-1SC	I.D.		O.D.		Max.W.P.		Min.B.P.		Min.B.R.		Weight	
	inch	mm	inch	mm	Psi	MPa	Psi	MPa	inch	mm	lbs/ft	g/m
-6	0.23	6.6	0.49	12.5	3,250	22.5	13,000	90.0	1.97	50	0.13	195
-8	0.32	8.1	0.54	13.7	3,120	21.5	12,480	86.0	2.17	55	0.14	205
-10	0.39	10.0	0.61	15.6	2,600	18.0	10,400	72.0	2.36	60	0.16	240
-12	0.51	13.0	0.75	19.0	2,320	16.0	9,280	64.0	2.76	70	0.23	340

DIB-2SC	I.D.		O.D.		Max.W.P.		Min.B.P.		Min.B.R.		Weight	
	inch	mm	inch	mm	Psi	MPa	Psi	MPa	inch	mm	lbs/ft	g/m
-6	0.25	6.3	0.53	13.4	5,800	40.0	23,200	160.0	1.77	45	0.20	290
-8	0.32	8.1	0.59	15.0	5,100	35.0	20,400	140.0	2.17	55	0.22	330
-10	0.39	10.0	0.68	17.3	4,780	33.0	19,120	132.0	2.56	65	0.30	445
-12	0.51	13.0	0.80	20.3	4,000	27.5	16,000	110.0	3.15	80	0.36	535

## DIB SERIES

### DIB Series- 1SN/2SN, 1SC/2SC Fittings

HOSE ID	SIZE	H	L	A	B
6	M14×1.5	17	50	2	19
8	M16×1.5	19	52.5	2	21
10	M18×1.5	22	52.5	1.5	21
12	M22×1.5	27	58	2.5	23.5
16	M26×1.5	32	64.5	2.5	26
19	M30×2	36	72.5	4	27.5
25	M36×2	41	81	4	29
31	M45×2	50	88.8	5	27
38	M52×2	60	105.5	5.5	30
51	—	—	—	—	—

**PART NO.DKOL**

HOSE ID	SIZE	H	L	J	E	A
6	M14×1.5	17	67.6	38.6	19.3	2
8	M16×1.5	19	68.3	38.8	19.6	2
10	M18×1.5	22	74.1	44.1	22.6	1.5
12	M22×1.5	27	84.7	52.7	26.4	2.5
16	M26×1.5	32	99.7	63.7	30.5	2.5
19	M30×2	36	110.7	69.7	33	4
25	M36×2	41	127.5	79.5	37.1	4
31	M45×2	50	152.2	95.4	42.6	5
38	M52×2	60	180.3	110.3	49.2	5.5
51	—	—	—	—	—	—

**PART NO.45DKOL**

HOSE ID	SIZE	H	L	J	E	A
6	M14×1.5	17	56.5	27.5	35.5	2
8	M16×1.5	19	57.5	28	36.5	2
10	M18×1.5	22	62	32	42.5	1.5
12	M22×1.5	27	71.5	39.5	50.5	2.5
16	M26×1.5	32	85	49	59	2.5
19	M30×2	36	97	56	66	4
25	M36×2	41	115	67	77	4
31	M45×2	50	140.3	83.5	91	5
38	M52×2	60	171	101	106.5	5.5
51	—	—	—	—	—	—

**PART NO.90DKOL**

HOSE ID	SIZE	H	L	A	B
6	M16×1.5	19	49.5	1.5	19
8	M18×1.5	22	50.5	1.5	19.5
10	M20×1.5	24	51.5	1	20.5
12	M24×1.5	30	55.5	2.5	21
16	M30×2	36	69.5	3.5	30
19	M36×2	46	73.5	3.5	29
25	M42×2	50	82	5	29
31	M52×2	60	91.3	6.5	28
38	—	—	—	—	—
51	—	—	—	—	—

**PART NO.DKOS**

### DIB Series- 1SN/2SN, 1SC/2SC Fittings

HOSE ID	SIZE	H	L	J	E	A
6	M16×1.5	19	68	39	19.7	1.5
8	M18×1.5	22	68.7	39.2	20	1.5
10	M20×1.5	24	74.4	44.4	23	1
12	M24×1.5	30	85.4	53.4	27.1	2.5
16	M30×2	36	101.2	65.2	32	3.5
19	M36×2	46	110.7	69.7	33	3.5
25	M42×2	50	127.5	79.5	37.1	5
31	M52×2	60	153.6	96.8	44	6.5
38	—	—	—	—	—	—
51	—	—	—	—	—	—

**PART NO.45DKOS**

HOSE ID	SIZE	H	L	J	E	A
6	M16×1.5	19	56.5	27.5	36	1.5
8	M18×1.5	22	57.5	28	37	1.5
10	M20×1.5	24	62	32	43	1
12	M24×1.5	30	71.5	39.5	51.5	2.5
16	M30×2	36	85	49	60.5	3.5
19	M36×2	46	97	56	66	3.5
25	M42×2	50	115	67	77	5
31	M52×2	60	140.3	83.5	93	6.5
38	—	—	—	—	—	—
51	—	—	—	—	—	—

**PART NO.90DKOS**

HOSE ID	SIZE	D	G	L	J	A	B
6	—	—	—	—	—	—	—
8	—	—	—	—	—	—	—
10	—	—	—	—	—	—	—
12	1/2"	30.2	6.73	73	41	9.5	25.5
16	3/4"	38.1	6.73	78	42	12	31.8
19	3/4"	38.1	6.73	83	42	15	31.8
25	1"	44.4	8	93	45	20	39.75
31	1.1/4"	50.8	8	106.8	50	26	44.51
38	1.1/2"	60.3	8	130	60	32	53.84
51	2"	71.4	9.53	134.5	62	43	63.37

**PART NO.3F**

HOSE ID	SIZE	E	D	G	L	J	A	B
6	—	—	—	—	—	—	—	—
8	—	—	—	—	—	—	—	—
10	—	—	—	—	—	—	—	—
12	1/2"	23	30.2	6.73	82.5	50.5	9.5	25.5
16	3/4"	25	38.1	6.73	94.5	58.5	12	31.8
19	3/4"	28	38.1	6.73	106	65	15	31.8
25	1"	29.4	44.4	8	123	75	20	39.75
31	1.1/4"	33.8	50.8	8	143.3	86.5	26	44.51
38	1.1/2"	40.4	60.3	8	171.9	101.9	32	53.84
51	2"	46.3	71.4	9.53	191.5	119	43	63.37

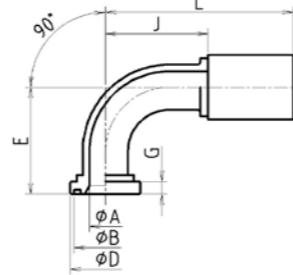
**PART NO.453F**

## DIB SERIES

### DIB Series- 1SN/2SN, 1SC/2SC Fittings

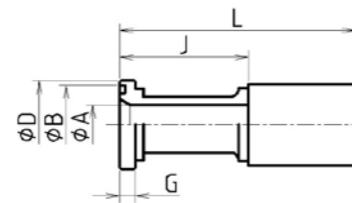
HOSE ID	SIZE	E	D	G	L	J	A	B
6	—	—	—	—	—	—	—	—
8	—	—	—	—	—	—	—	—
10	—	—	—	—	—	—	—	—
12	1/2"	45.5	30.2	6.73	71	39	9.5	25.5
16	3/4"	51	38.1	6.73	85	49	12	31.8
19	3/4"	59	38.1	6.73	99	58	15	31.8
25	1"	66	44.4	8	115	67	20	39.75
31	1.1/4"	78.5	50.8	8	140.3	83.5	26	44.5
38	1.1/2"	94	60.3	8	171	101	32	54
51	2"	114.5	71.4	9.53	202.5	130	43	63.3

PART NO.903F



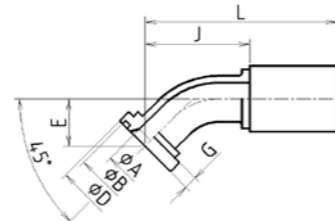
HOSE ID	SIZE	D	G	L	J	A	B
6	—	—	—	—	—	—	—
8	—	—	—	—	—	—	—
10	—	—	—	—	—	—	—
12	1/2"	31.7	7.75	74	42	9.5	25.5
16	3/4"	41.3	8.76	81	45	12	31.8
19	3/4"	41.3	8.76	86	45	15	31.8
25	1"	47.6	9.53	98	50	20	39.75
31	1.1/4"	54	10.29	114.8	58	26	44.51
38	1.1/2"	63.5	12.57	137	67	32	53.84
51	2"	79.4	12.57	149.5	77	43	63.37

PART NO.6F



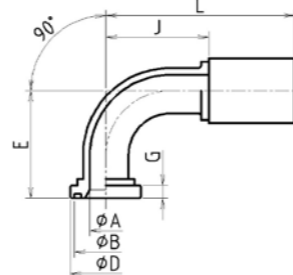
HOSE ID	SIZE	E	D	G	L	J	A	B
6	—	—	—	—	—	—	—	—
8	—	—	—	—	—	—	—	—
10	—	—	—	—	—	—	—	—
12	1/2"	25.1	31.7	7.75	85	53	9.5	25.5
16	3/4"	27.8	41.3	8.76	97	61	12	31.8
19	3/4"	30.5	41.3	8.76	108.5	67.5	15	31.8
25	1"	34.4	47.6	9.53	128	80	20	39.75
31	1.1/4"	41.5	54	10.29	151.8	95	26	44.5
38	1.1/2"	50.3	63.5	12.57	182	112	32	54
51	2"	62	79.4	12.57	207.5	135	43	63.3

PART NO.456F



HOSE ID	SIZE	E	D	G	L	J	A	B
6	—	—	—	—	—	—	—	—
8	—	—	—	—	—	—	—	—
10	—	—	—	—	—	—	—	—
12	1/2"	48.5	31.7	7.75	71	39	9.5	25.5
16	3/4"	55	41.3	8.76	85	49	12	31.8
19	3/4"	63	41.3	8.76	98	57	15	31.8
25	1"	73	47.6	9.53	115	67	20	39.75
31	1.1/4"	89.5	54	10.29	140.3	83.5	26	44.51
38	1.1/2"	108	63.5	12.57	171	101	32	53.84
51	2"	137	79.4	12.57	202.5	130	43	63.37

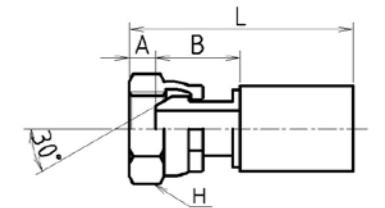
PART NO.906F



### DIB Series- 1SN/2SN, 1SC/2SC Fittings

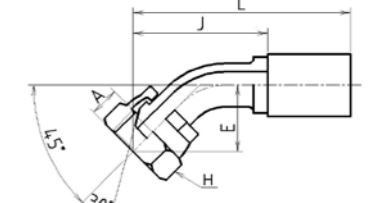
HOSE ID	SIZE	H	L	A	B
6	G1/4" x19	19	48.8	5.3	14.5
8	G3/8" x19	22	50	5.5	15
10	G3/8" x19	22	50.5	5.5	15
12	G1/2" x14	27	55.5	6.5	17
16	G5/8" x14	30	62.5	9.5	17
19	G3/4" x14	32	67.9	8.9	18
25	G1" x11	41	77.5	10.5	19
31	G1.1/4" x11	50	90.3	10	23.5
38	G1.1/2" x11	55	106.5	12.5	24
51	G2" x11	70	114.5	16	26

PART NO.5



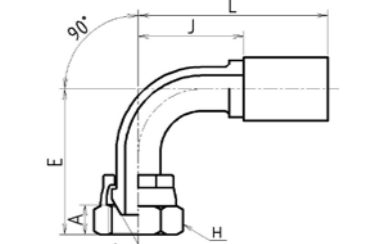
HOSE ID	SIZE	H	L	J	A	E
6	G1/4" x19	19	70.6	41.6	5.3	22.3
8	G3/8" x19	22	71.8	42.3	5.5	22.1
10	G3/8" x19	22	76.9	46.9	5.5	25.4
12	G1/2" x14	27	88.6	56.6	6.5	30.3
16	G5/8" x14	30	103.6	67.6	9.5	34.4
19	G3/4" x14	32	114.5	73.5	8.9	36.8
25	G1" x11	41	131.7	83.7	10.5	41.3
31	G1.1/4" x11	50	156.6	99.8	10	47.3
38	G1.1/2" x11	55	189	119	12.5	55.9
51	G2" x11	70	212	139.5	16	67.5

PART NO.455



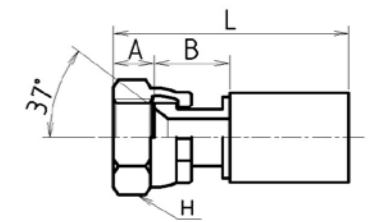
HOSE ID	SIZE	H	L	J	A	E
6	G1/4" x19	19	56.5	27.5	5.3	39.3
8	G3/8" x19	22	57.5	28	5.5	41.5
10	G3/8" x19	22	62	32	5.5	46.5
12	G1/2" x14	27	71.5	39.5	6.5	56.5
16	G5/8" x14	30	85	49	9.5	64.5
19	G3/4" x14	32	97	56	8.9	70.9
25	G1" x11	41	115	67	10.5	82.5
31	G1.1/4" x11	50	140.3	83.5	10	100
38	G1.1/2" x11	55	170	100	12.5	117.5
51	G2" x11	70	193.5	121	16	144.5

PART NO.905



HOSE ID	SIZE	H	L	A	B
6	7/16" x20	14	48.5	9	10.5
8	1/2" x20	17	50	9.5	11
10	9/16" x18	19	51.5	9.5	12
12	3/4" x16	24	56	11	13
16	7/8" x14	27	63	13	14
19	1.1/16" x12	32	71.5	15	15.5
25	1.5/16" x12	41	79.5	15.5	16
31	1.5/8" x12	50	90.8	16	18
38	1.7/8" x12	55	108.5	19	19.5
51	2.1/2" x12	75	115	23.5	19

PART NO.4U

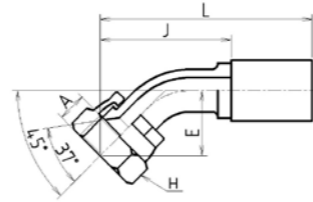


## DHD SERIES

### DIB Series- 1SN/2SN, 1SC/2SC Fittings

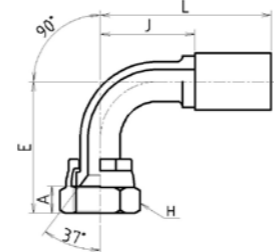
HOSE ID	SIZE	H	L	J	A	E
6	7/16" x 20	14	70.8	41.8	9	22.5
8	1/2" x 20	17	71.8	42.3	9.5	23.1
10	9/16" x 18	19	77.9	47.9	9.5	26.5
12	3/4" x 16	22	89.7	57.7	11	31.3
16	7/8" x 14	27	103.6	67.6	13	34.4
19	1.1/16" x 12	32	117	76	15	39.4
25	1.5/16" x 12	41	113.5	85.5	15.5	43.1
31	1.5/8" x 12	50	158.9	102.1	16	49.3
38	1.7/8" x 12	55	190.4	120.4	19	57.3
51	2.1/2" x 12	75	217.4	144.9	23.5	67.9

PART NO.454U



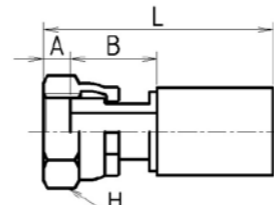
HOSE ID	SIZE	H	L	J	A	E
6	7/16" x 20	14	54.5	25.5	9	38
8	1/2" x 20	17	57.5	28	9.5	41.5
10	9/16" x 18	19	62	32	9.5	48
12	3/4" x 16	24	71	39	11	57.5
16	7/8" x 14	27	86	50	13	64.5
19	1.1/16" x 12	32	97	56	14.5	74.5
25	1.5/16" x 12	41	115	67	15.5	85.5
31	1.5/8" x 12	50	140.3	83.5	16	100.5
38	1.7/8" x 12	55	171	101	19	119
51	2.1/2" x 12	75	193.5	121	23.5	145

PART NO.904U



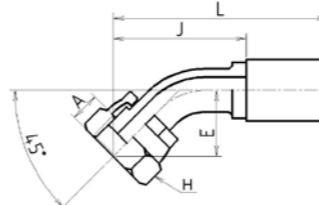
HOSE ID	SIZE	H	L	A	B
6	9/16" x 18	19	55.5	8.5	18
8	11/16" x 16	22	58.5	10	19
10	11/16" x 16	22	60.5	9	21.5
12	13/16" x 16	27	66.5	11	23.5
16	1" x 14	30	77	13.5	27.5
19	1.3/16" x 12	36	85	15	29
25	1.7/16" x 12	41	94	15	31
31	2" x 12	60	85.3	28.5	14.8
38	2" x 12	60	113.3	14.8	28.5
51	-	-	-	-	-

PART NO.KO



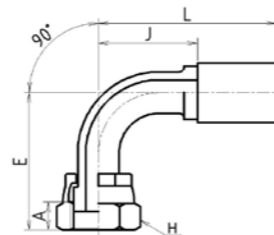
HOSE ID	SIZE	H	L	J	A	E
6	9/16" x 18	19	75.3	46.3	8.5	27
8	11/16" x 16	22	70.8	41.3	9	22.1
10	11/16" x 16	22	84.3	54.3	10	32.8
12	13/16" x 16	27	96.4	64.4	11	38.1
16	1" x 14	30	113.5	77.5	13.5	44.3
19	1.3/16" x 12	36	126.2	85.2	15	48.6
25	1.7/16" x 12	41	143	95	15	52.6
31	2" x 12	60	145	88	13.8	44.9
38	2" x 12	60	181.2	111.2	14.8	50.1
51	-	-	-	-	-	-

PART NO.45KO



HOSE ID	SIZE	H	L	J	A	E
6	9/16" x 18	19	54.5	25.5	8.5	44.5
8	11/16" x 16	22	58	28.5	10	45
10	11/16" x 16	22	62	32	10	58
12	13/16" x 16	27	70.5	38.5	11	67
16	1" x 14	30	85	49	13.5	78.5
19	1.3/16" x 12	36	99	58	15	90
25	1.7/16" x 12	41	115	67	15	97
31	2" x 12	50	140.3	83.5	13.8	94.3
38	2" x 12	60	171	101	14.8	107.8
51	-	-	-	-	-	-

PART NO.90KO



# HYDRAULIC HOSES

ADUANSTAR★



Reliable  
High-End  
Japan  
Technology

Ultra  
Durable

Super  
Soft

Super  
Handy

## DHD SERIES

### Main application

Construction Machine, Agricultural Machine, Industrial Equipment, Machining Tool and various Hydraulic System.

### Features

- Good Anti-aging performance, Long impulse pressure life
- Exceed DIN standard design, Flexibility performance
- Economic and environmental
- Easy to select the fittings
- high pressure large diameter series
- No need skiving for 4SP, 4SH

standard : DIN EN856

Packing : Cardboard Box

Hose Structure	INNER COVER : OIL RESISTANT SYNTHETIC RUBBER
	REINFORCEMENT : STEEL WIRE
	OUTER COVER : Oil and Weather Resistant Synthetic Rubber
Recommended Fluids	Mineral Hydraulic Oil
Operating Temperature	-40°C ~ +120°C

Hose Layline Color : Blue

Hose Structure & Reinforcement



DHD-4SP												
	I.D.		O.D.		Max.W.P.		Min.B.P.		Min.B.R.		Weight	
	inch	mm	inch	mm	Psi	MPa	Psi	MPa	inch	mm	lbs/ft	g/m
-10	0.37	9.5	0.84	21.3	6,000	44.5	24,000	178.0	5.12	130	0.44	645
-12	0.51	12.9	0.96	24.4	6,000	41.5	24,000	166.0	5.51	140	0.49	730
-16	0.63	16.0	1.10	28.0	5,500	38.0	22,000	152.0	6.30	160	0.69	1,025
-19	0.76	19.2	1.25	31.8	5,500	38.0	22,000	152.0	7.87	200	0.98	1,450
-25	1.00	25.4	1.55	39.4	4,650	32.5	18,600	130.0	9.06	230	1.32	1,945

DHD-4SH												
	I.D.		O.D.		Max.W.P.		Min.B.P.		Min.B.R.		Weight	
	inch	mm	inch	mm	Psi	MPa	Psi	MPa	inch	mm	lbs/ft	g/m
-19	0.76	19.2	1.25	31.8	6,000	42.0	24,000	168.0	9.06	230	0.98	1,450
-25	1.00	25.4	1.53	38.8	5,500	38.0	22,000	152.0	9.45	240	1.36	2,010
-31	1.25	31.8	1.80	45.7	4,500	32.5	18,000	130.0	9.84	250	1.74	2,565
-38	1.50	38.1	2.09	53.0	4,200	29.0	16,800	116.0	12.20	310	2.12	3,130
-51	2.00	50.8	2.67	67.8	3,620	25.0	14,480	100.0	17.72	450	3.37	4,975

EXS-4SP												
	I.D.		O.D.		Max.W.P.		Min.B.P.		Min.B.R.		Weight	
	inch	mm	inch	mm	Psi	MPa	Psi	MPa	inch	mm	lbs/ft	g/m
-12	0.51	12.9	0.90	22.9	6,100	42.0	24,400	168	5.31	135	0.51	750
-16	0.63	16.0	1.05	26.6	5,500	38.0	22,000	152	6.30	160	0.70	1,030
-19	0.76	19.2	1.19	30.1	5,500	38.0	22,000	152	7.87	200	0.90	1,325
-25	1.00	25.4	1.46	37.1	4,500	32.5	18,000	130	9.06	230	1.18	1,750

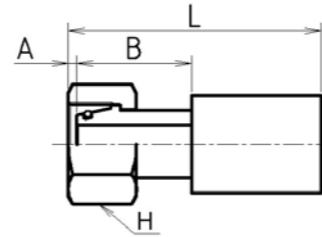
EXS-4SH												
	I.D.		O.D.		Max.W.P.		Min.B.P.		Min.B.R.		Weight	
	inch	mm	inch	mm	Psi	MPa	Psi	MPa	inch	mm	lbs/ft	g/m
-25	1.00	25.4	1.48	37.6	5,500	38.0	22,000	152	9.45	240	1.29	1,910
-31	1.25	31.8	1.80	45.7	5,100	35.0	20,400	140	9.84	250	1.74	2,565

## DHD Series

### DHD Series- 4SP/4SH Fittings

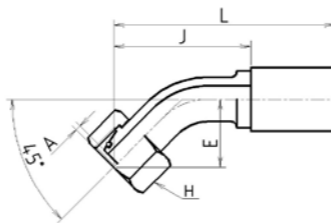
HOSE ID	SIZE	H	L	A	B
6	M14×1.5	17	50	2	19
8	M16×1.5	19	52.5	2	21
10	M18×1.5	22	52.5	1.5	21
12	M22×1.5	27	58	2.5	23.5
16	M26×1.5	32	64.5	2.5	26
19	M30×2	36	72.5	4	27.5
25	M36×2	41	81	4	29
31	M45×2	50	88.8	5	27
38	M52×2	60	105.5	5.5	30
51	—	—	—	—	—

PART NO. DKOL



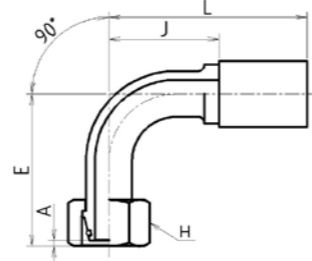
HOSE ID	SIZE	H	L	J	E	A
6	M14×1.5	17	67.6	38.6	19.3	2
8	M16×1.5	19	68.3	38.8	19.6	2
10	M18×1.5	22	74.1	44.1	22.6	1.5
12	M22×1.5	27	84.7	52.7	26.4	2.5
16	M26×1.5	32	99.7	63.7	30.5	2.5
19	M30×2	36	110.7	69.7	33	4
25	M36×2	41	127.5	79.5	37.1	4
31	M45×2	50	152.2	95.4	42.6	5
38	M52×2	60	180.3	110.3	49.2	5.5
51	—	—	—	—	—	—

PART NO. 45DKOL



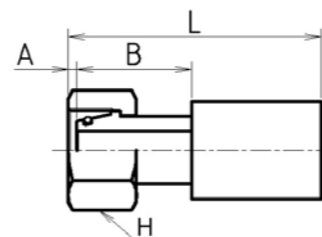
HOSE ID	SIZE	H	L	J	E	A
6	M14×1.5	17	56.5	27.5	35.5	2
8	M16×1.5	19	57.5	28	36.5	2
10	M18×1.5	22	62	32	42.5	1.5
12	M22×1.5	27	71.5	39.5	50.5	2.5
16	M26×1.5	32	85	49	59	2.5
19	M30×2	36	97	56	66	4
25	M36×2	41	115	67	77	4
31	M45×2	50	140.3	83.5	91	5
38	M52×2	60	171	101	106.5	5.5
51	—	—	—	—	—	—

PART NO. 90DKOL



HOSE ID	SIZE	H	L	A	B
6	M16×1.5	19	50	1.5	19.5
8	M18×1.5	22	51	1	20.5
10	M20×1.5	24	56.5	2.5	24
12	M24×1.5	30	60	3	25
16	M30×1.5	36	69.5	3.5	30
19	M36×1.5	46	72	5	26
25	M42×1.5	50	82	5	29
31	M52×1.5	60	91.3	6.5	28
38	—	—	—	—	—
51	—	—	—	—	—

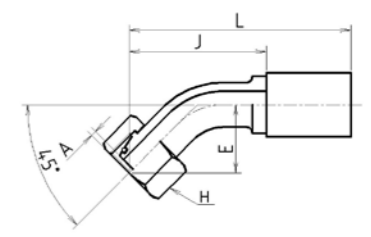
PART NO. DKOS



### DHD Series- 4SP/4SH Fittings

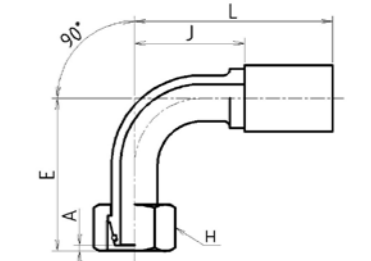
HOSE ID	SIZE	H	L	J	E	A
6	M16×1.5	19	68	39	19.7	1.5
8	M18×1.5	22	69.4	39.9	20.7	1
10	M20×1.5	24	77.2	47.2	25.8	2.5
12	M24×1.5	30	88.1	56.1	28.6	3
16	M30×2	36	101.2	65.2	32	3.5
19	M36×2	46	112.1	71.1	34.4	5
25	M42×2	50	132.5	84.5	38.6	5
31	M52×2	60	153.6	96.8	44	6.5
38	—	—	—	—	—	—
51	—	—	—	—	—	—

PART NO. 45DKOS



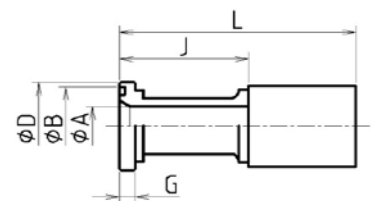
HOSE ID	SIZE	H	L	J	E	A
6	M16×1.5	19	56.5	27.5	36	1.5
8	M18×1.5	22	57.5	28	38	1
10	M20×1.5	24	62	32	46.5	2.5
12	M24×1.5	30	70.5	38.5	53.5	3
16	M30×2	36	85	49	60.5	3.5
19	M36×2	46	97	56	68	5
25	M42×2	50	115	67	79	5
31	M52×2	60	140.3	83.5	93	6.5
38	—	—	—	—	—	—
51	—	—	—	—	—	—

PART NO. 90DKOS



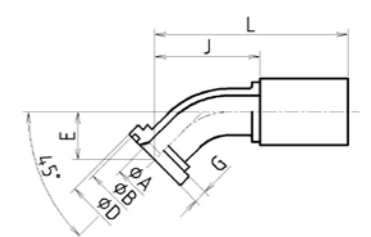
HOSE ID	SIZE	D	G	L	J	A	B
6	—	—	—	—	—	—	—
8	—	—	—	—	—	—	—
10	—	—	—	—	—	—	—
12	1/2"	30.2	6.73	73	41	9.5	25.5
16	3/4"	38.1	6.73	78	42	12	31.8
19	3/4"	38.1	6.73	83	42	15	31.8
25	1"	44.4	8	93	45	20	39.75
31	1.1/4"	50.8	8	106.8	50	26	44.5
38	1.1/2"	60.3	8	130	60	32	54
51	2"	71.4	9.53	134.5	62	43	63.3

PART NO. 3F



HOSE ID	SIZE	E	D	G	L	J	A	B
6	—	—	—	—	—	—	—	—
8	—	—	—	—	—	—	—	—
10	—	—	—	—	—	—	—	—
12	1/2"	23	30.2	6.73	82.5	50.5	9.5	25.5
16	3/4"	24.8	38.1	6.73	94.5	58.5	12	31.8
19	3/4"	28	38.1	6.73	106	65	15	31.8
25	1"	29.4	44.4	8	123	75	20	39.75
31	1.1/4"	33.8	50.8	8	143.3	86.5	26	44.5
38	1.1/2"	40.4	60.3	8	171.9	101.9	32	54
51	2"	46.3	71.4	9.53	191.5	119	43	63.3

PART NO. 453F



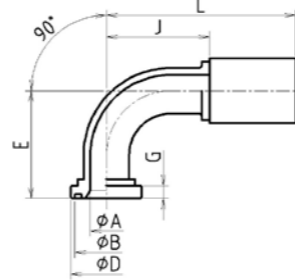


## DHD SERIES

### DHD Series-4SP/4SH Fittings

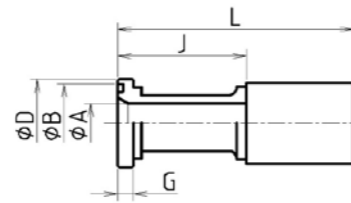
HOSE ID	SIZE	E	D	G	L	J	A	B
6	—	—	—	—	—	—	—	—
8	—	—	—	—	—	—	—	—
10	—	—	—	—	—	—	—	—
12	1/2"	47	30.2	6.73	71	39	9.5	25.5
16	3/4"	53	38.1	6.73	85	49	12	31.8
19	3/4"	59	38.1	6.73	99	58	15	31.8
25	1"	66	44.4	8	115	67	20	39.75
31	1.1/4"	78.5	50.8	8	140.3	83.5	26	44.5
38	1.1/2"	94	60.3	8	171	101	32	54
51	2"	115	71.4	9.53	202.5	130	43	63.3

PART NO.903F



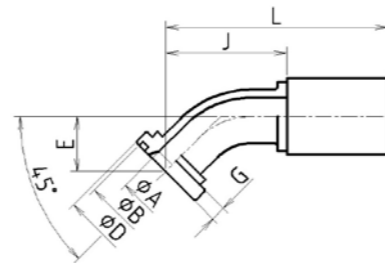
HOSE ID	SIZE	D	G	L	J	A	B
6	—	—	—	—	—	—	—
8	—	—	—	—	—	—	—
10	—	—	—	—	—	—	—
12	1/2"	31.7	7.75	74	42	9.5	25.5
16	3/4"	41.3	8.76	81	45	12	31.8
19	3/4"	41.3	8.76	86	45	15	31.8
25	1"	47.6	9.53	98	50	20	39.75
31	1.1/4"	54	10.29	114.8	58	26	44.51
38	1.1/2"	63.5	12.57	137	67	32	53.84
51	2"	79.4	12.57	149.5	77	43	63.37

PART NO.6F



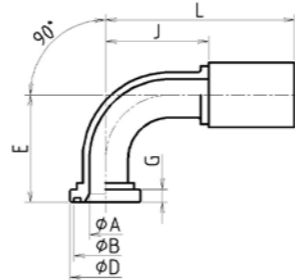
HOSE ID	SIZE	E	D	G	L	J	A	B
6	—	—	—	—	—	—	—	—
8	—	—	—	—	—	—	—	—
10	—	—	—	—	—	—	—	—
12	1/2"	25.1	31.7	7.75	85	53	9.5	25.5
16	3/4"	27.8	41.3	8.76	97	61	12	31.8
19	3/4"	30.9	41.3	8.76	108.5	67.5	15	31.8
25	1"	34.4	47.6	9.53	128	80	20	39.75
31	1.1/4"	41.5	54	10.29	151.8	95	26	44.51
38	1.1/2"	50.3	63.5	12.57	182	112	32	53.84
51	2"	62	79.4	12.57	207.5	135	43	63.37

PART NO.456F



HOSE ID	SIZE	E	D	G	L	J	A	B
6	—	—	—	—	—	—	—	—
8	—	—	—	—	—	—	—	—
10	—	—	—	—	—	—	—	—
12	1/2"	48.5	31.7	7.75	71	39	9.5	25.5
16	3/4"	55	41.3	8.76	85	49	12	31.8
19	3/4"	63	41.3	8.76	98	57	15	31.8
25	1"	73	47.6	9.53	115	67	20	39.75
31	1.1/4"	89.5	54	10.29	140.3	83.5	26	44.51
38	1.1/2"	104	63.5	12.57	171	101	32	53.84
51	2"	137	79.4	12.57	202.5	130	43	63.37

PART NO.906F



## R15 Series

### Hose Layline Color : Purple

Hose Structure	INNER COVER : OIL RESISTANT SYNTHETIC RUBBER
	REINFORCEMENT : STEEL WIRE
	OUTER COVER : Oil and Weather Resistant Synthetic Rubber
Recommended Fluids	General Hydraulic Oil, Mineral Hydraulic Oil
Hose Structure	-40°C~+120°C (-40F~+212F)

### Hose Structure & Reinforcement

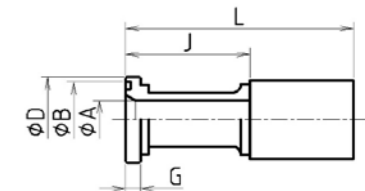
6W/S



DHD-R15	I.D.		O.D.		Max.W.P.		Min.B.P.		Min.B.R.		g/m	
	inch	mm	inch	mm	Psi	MPa	Psi	MPa	inch	mm	lbs/ft	lbs/ft
	-31	1.25	31.8	1.96	49.7	6,100	42.0	24,400	168.0	12.60	320	2.55
-38	1.50	38.1	2.28	57.8	6,100	42.0	24,400	168.0	14.96	380	3.41	5,040
-51	2.00	50.8	2.88	73.1	6,100	42.0	24,400	168.0	18.90	480	5.00	7,390

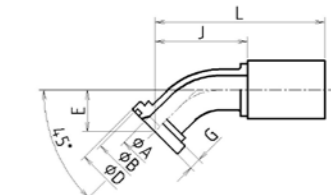
HOSE ID	SIZE	E	D	G	L	J	A	B
16	—	—	—	—	—	—	—	—
19	—	—	—	—	—	—	—	—
25	—	—	—	—	—	—	—	—
31	1 · 1/4"	—	54	10.3	149	71	26	44.51
38	1 · 1/2"	—	63.5	12.6	163	73	31.8	53.84
51	2"	—	79.4	12.6	235	110	42	63.37

PART NO.6F



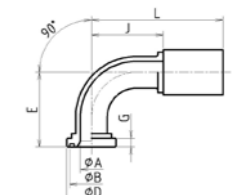
HOSE ID	SIZE	E	D	G	L	J	A	B
16	—	—	—	—	—	—	—	—
19	—	—	—	—	—	—	—	—
25	—	—	—	—	—	—	—	—
31	1 · 1/4"	47	54	10.3	183	105	27.1	44.51
38	1 · 1/2"	63	63.5	12.6	235	145	32.4	53.84
51	2"	76	79.4	12.6	311	186	42	63.37

PART NO.456F



HOSE ID	SIZE	E	D	G	L	J	A	B
16	—	—	—	—	—	—	—	—
19	—	—	—	—	—	—	—	—
25	—	—	—	—	—	—	—	—
31	1 · 1/4"	100	54	10.3	174	96	27.1	44.51
38	1 · 1/2"	115	63.5	12.6	205	115	32.4	53.84
51	2"	155	79.4	12.6	291	166	42	63.37

PART NO.906F



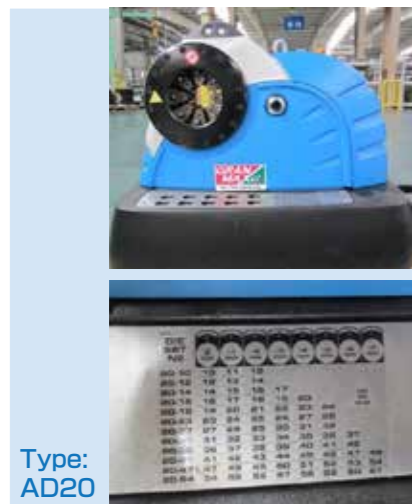
## Manual crimping machine

We have been providing not only Hose, Fittings and Hose Assemblies but also we provide manual crimping lease service.

To market's satisfaction, we provide corresponding crimping parameters, integrative implementation and technical services.

### Crimping machine specification

	AD20	AD32
Crimping range (mm)	10~61	10~87
Crimping force (kn)	1370	2000
Number of crimpings / hour	850	850
Hose size ID (Inch)	1½	2
Die type	20	32
Max opening (mm)	+25	+33
motor (kw)	3	4
Width*length*height (mm)	800*630*626	800*630*637
Weight without oil (kg)	157	205



Type:  
AD20



Type:  
AD32

### ADVANSTAR Crimping range



Crimping Machine	ADVANSTAR Crimping range				
	1SN	2SN	4SP	4SH	
AD20	-6	●	●	/	
	-8	●	●	/	
	-10	●	●	●	
	-12	●	●	●	
	-16	●	●	●	
	-19	●	●	●	●
	-25	●	●	●	●
	-31			/	
	-38			/	
	-51			/	
AD32	-6	●	●	/	
	-8	●	●	/	
	-10	●	●	●	
	-12	●	●	●	
	-16	●	●	●	
	-19	●	●	●	●
	-25	●	●	●	●
	-31	●	●	/	●
	-38	●	●	/	●
	-51	●	●	/	●