

# HD

# SERIES

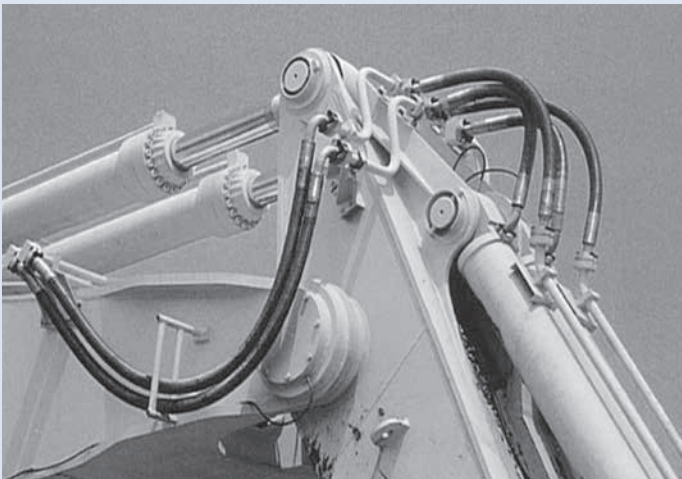
**HD SERIES means the hoses for Heavy Duty works.  
It can stand the hard condition such as Construction and Mining Machinery.**

**HD SERIES strengthens a long life and a high temperature resistant.**

**HD SERIES can correspond to the needs for the customers.**

It is easy for the customers to design the hydraulic plumbing line, because HD SERIES adopts thin outer cover, And it is a remarkable improvement on the existing product regarding Min. bend radius , Flexibility , Weight.

We get complete sets of the high -quality and high-performance hose series to correspond to Ultra high pressure and bigger diameter for hydraulic line.



## HD SERIES

# HD350

### HOSE STRUCTURE

INNER COVER: OIL RESISTANT SYNTHETIC RUBBER  
REINFORCEMENT: STEEL WIRE  
OUTER COVER: OIL&OZONE RESISTANT SYNTHETIC RUBBER

### RECOMMENDED FLUIDS

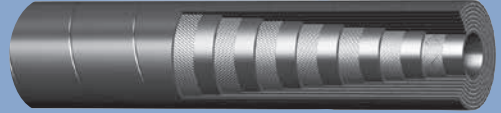
MINERAL SYNTHETIC OIL

### OPERATING TEMPERATURE

-40°C~+100°C(-40°F~+212°F)

### HOSE STRUCTURE&REINFORCEMENT

6W/S



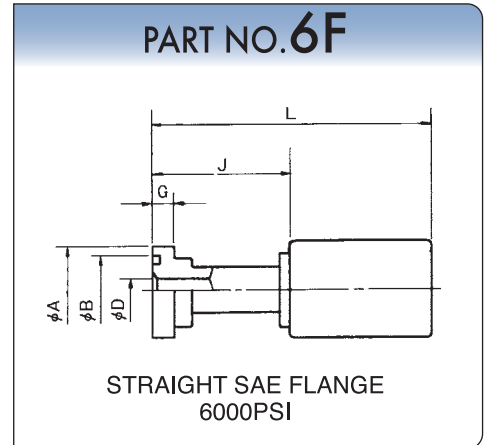
## HD 350

SIZE	REINFORCEMENT	INNER DIAMETER mm (inch)	OUTER DIAMETER mm	MAX WORKING PRESSURE MPa (bar)	MIN. BURST PRESSURE MPa (bar)	MIN. BEND RADIUS mm	WEIGHT g/m
32	6W/S	31.8 (1¼)	49.7	35 (350)	140 (1,400)	320	3,845
38	6W/S	38.1 (1½)	57.8	35 (350)	140 (1,400)	370	5,160
50	6W/S	50.8 (2)	73.1	35 (350)	140 (1,400)	480	7,500

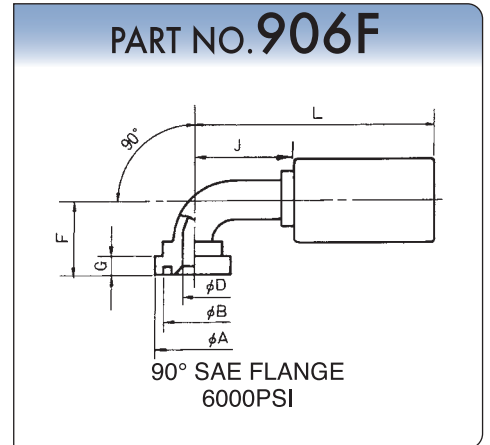
# HD SERIES

# HD350

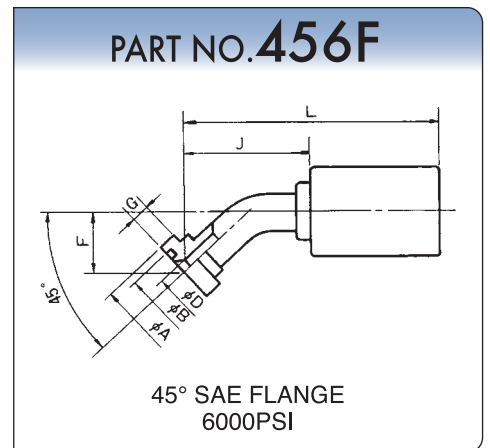
SIZE	A	B	D	G	J		L	WT
32	54.0	44.51	26.0	10.3	71		149	1,169
38	63.5	53.84	31.8	12.6	73		163	1,660
50	79.4	63.37	42.0	12.6	110		235	3,489



SIZE	A	B	D	F	G	J		L	WT
32	54.0	44.51	27.1	100	10.3	96		174	1,600
38	63.5	53.84	32.4	115	12.6	115		205	2,420
50	79.4	63.37	42	155	12.6	166		291	4,950



SIZE	A	B	D	F	G	J		L	WT
32	54.0	44.51	27.1	47	10.3	105		183	1,380
38	63.5	53.84	32.4	63	12.6	145		235	2,200
50	79.4	63.37	42	76	12.6	186		311	4,295

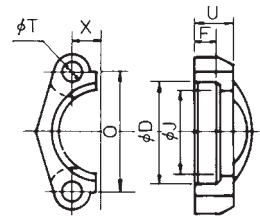


# ACCESSORIES

## SAE SPLIT FLANGE

PART.NO	D	F	J	O	T	U	X	weight
SF-3008	31.0	6.09~6.35	24.3	38.1	8.7	12.7	8.7	55
SF-3012	38.9	6.09~6.35	32.1	47.6	10.3	14.2	11.1	80
SF-3016	45.2	7.36~7.62	38.5	52.4	10.3	15.7	13.1	110
SF-3020	51.6	7.36~7.62	43.7	58.7	11.9	14.2	15.1	135
SF-3024	61.1	7.41~7.67	50.8	69.9	13.5	15.7	17.9	215
SF-3032	72.2	8.89~9.15	62.7	77.8	13.5	15.7	21.4	250

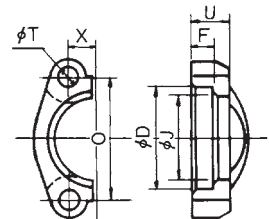
### PART NO. SF3000



SAE SPLIT FLANGE CLAMPS  
3000PSI CODE61-SAE J518

PART.NO	D	F	J	O	T	U	X	weight
SF-6008	32.5	6.97~7.23	24.6	40.4	8.4	16.0	9.1	60
SF-6012	42.1	8.13~8.39	32.5	50.8	10.3	19.0	11.9	150
SF-6016	48.4	8.89~9.15	38.9	57.2	11.9	23.9	13.9	250
SF-6020	54.8	9.65~9.91	44.5	66.7	13.5	26.9	15.9	400
SF-6024	64.3	11.94~12.20	51.6	79.4	16.7	30.2	18.3	590
SF-6032	80.2	11.94~12.20	67.6	96.8	19.8	36.6	22.2	1,100

### PART NO. SF6000



SAE SPLIT FLANGE CLAMPS  
6000PSI CODE62-SAE J518

## ACCESSORIES O'RING

Size	SAE 3000PSI-6000PSI O'RING		
	inch	O'RING	
		JIS	SAE
15	1/2	W1516 AN6227-15	MIL-P-25732-210
20	3/4	W1516 AN6227-19	MIL-P-25732-214
25	1	W1516 AN6227-24	MIL-P-25732-219
32	1 1/4	W1516 AN6227-27	MIL-P-25732-222
40	1 1/2	W1517 AN6230-3	MIL-P-25732-225
50	2	W1517 AN6230-6	MIL-P-25732-228

The hardness of O'RING recommend JIS90°

## BOLT·NATT FOR FLANGE

Size	SAE 3000 PSI		SAE 6000 PSI	
	inch	BOLT	inch	BOLT
15	1/2	5/16 -18UNC2A	1/2	5/16 -18UNC2A
20	3/4	3/8 -16UNC2A	3/4	3/8 -16UNC2A
25	1	3/8 -16UNC2A	1	7/16 -14UNC2A
32	1 1/4	7/16 -14UNC2A	1 1/4	1/2 -13UNC2A
40	1 1/2	1/2 -13UNC2A	1 1/2	5/8 -11UNC2A
50	2	1/2 -13UNC2A	2	3/4 -10UNC2A