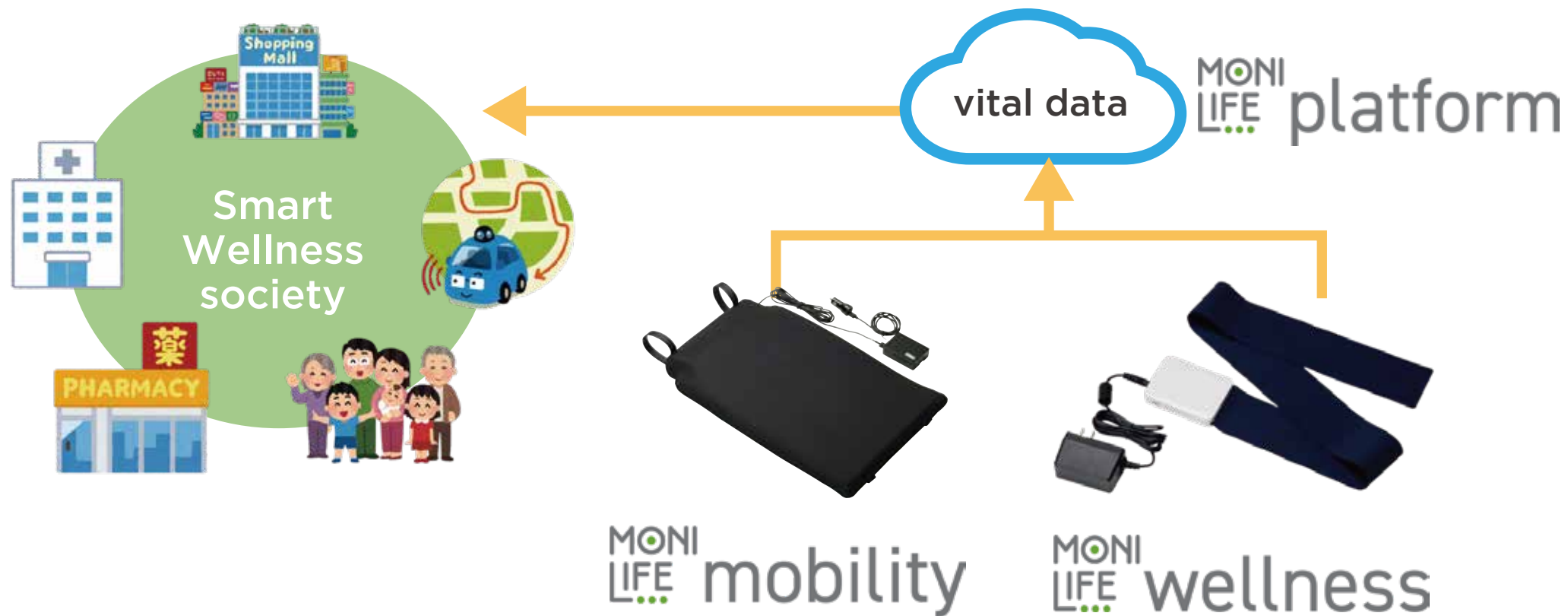




# Life Monitoring Technology “MONILIFE series”



## Realizing a wellness society by using the vital data in the Mobility and communication field



Summary

MONILIFE Mobility

MONILIFE Wellness

MONILIFE platform

To Top

English



# vital sensor for car seat “MONILIFE series”



## Outline

Vital sensor for realizing the safety driving control system or reassuring operation management service

- It is made of the **special elastic material** and can be built-in a cushion, which is **soft and conductive**.
- It can **estimate heartrates and breathings** from your pressure changes
- We can also **estimate a passenger's condition** ;predictive drowsiness and healthcare risk
- **movie**  
<https://youtu.be/Oyp88XALUp4>  
**press release**



Summary

MONILIFE Mobility

MONILIFE Wellness

MONILIFE platform

To Top

English



# Vital sensor during sleep “MONILIFE Wellness”



## Outline

detecting a vital data

- sensor is **thin** and **soft**
- **just putting it on a mattress** and connect
- putting a **piezoelectric elastic sensor** to practical use



## features

- easy and compact → **totable**
- thin, soft and stretchy: application of the smart rubber from unique material
- **no uncomfortable feeling**; non-invasive
- **remote monitoring** through a communication unit; PC or smartphone
- data can be output by **CSV format** and analyze

## product



## [available info]

- aspiration rate variability
- aspiration rate
- heartrate
- HRV
- getting up or not



Summary

MONILIFE Mobility

MONILIFE Wellness

MONILIFE platform

To Top

English



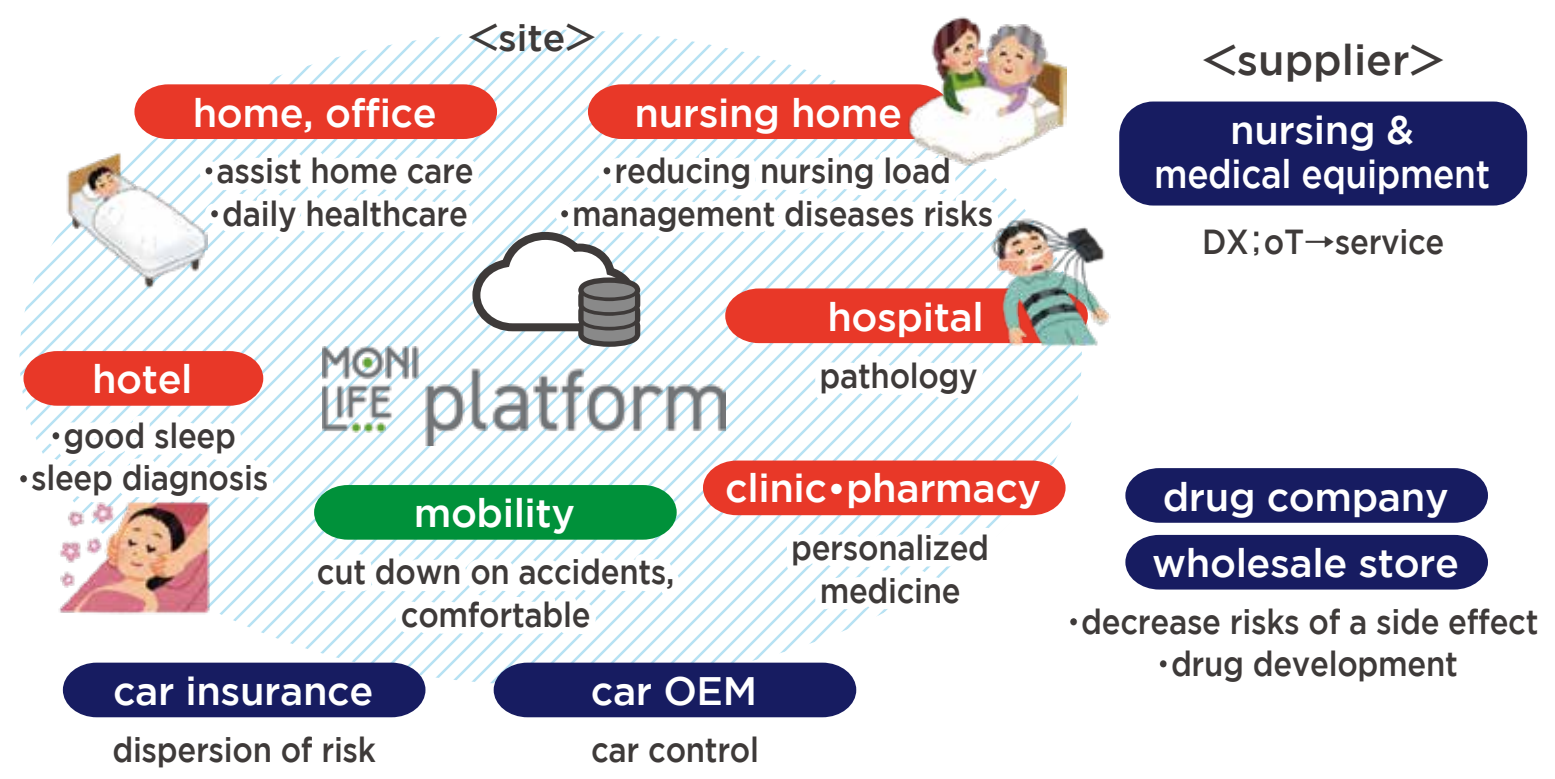
# “MONILIFE platform”



## It's an infrastructure in a smart wellness society which reminds our health condition gently and daily basis



- government**  
decrease medical cost, shift to prophylaxis
- life insurance**
- health insurance**  
dispersion of risk
- CES company**  
auto control A/C or lighting etc...



Summary

MONILIFE Mobility

MONILIFE Wellness

MONILIFE platform

To Top

English